

Tags and Turnarounds

By Rebecca Bogart and Jenny Peters



An Introduction to Tags and Turnarounds

Playing the ukulele is a wonderful thing to do for a lot of reasons. One is that you can develop your musical creativity by making your own versions of the songs you play and/or sing.

Tags and turnarounds are great tools for putting together your own song arrangements. So, here are a couple definitions to start our exploration of tags and turnarounds.

Turnaround- a **turnaround** is a passage at the end of a section of music which leads to the next section.

Tag- a tag is a distinct end to a song. In other words, the listener hears the song end without a gradual fade in volume.

Uses for Turnarounds

Here are two things you can do with a turnaround.

1. Combine two sections in two different keys.

A turnaround can help you combine two songs (or do one song in two keys) in a really fun and seamless way. Many of the songs in *21 Easy Ukulele Folk Songs* are presented in two keys: “Lil’ Liza Jane,” “Lovely Evening,” “Happy Birthday,” “Go Tell Aunt Rhody,” and “Sweet Betsy From Pike.”

We chose to include these songs in two keys so that:

- You could choose the key that is easiest to play.
- You could choose the key that is easiest to sing.
- Or, you can combine both keys to make a more interesting arrangement.

2. Vamp.

A turnaround can also be used to create a **vamp**. A vamp is a repeating musical figure. An example of a vamp would be the guitar riff that begins “Smoke on the Water.” If you are singing or playing with a group of people, a vamp can allow you to rap funny lyrics, introduce the song, encourage others to join in or give you an opportunity to personalize the lyrics in a funny way for the people you are with.

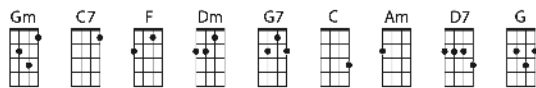
Here are turnarounds for the 3 major keys that we use in *21 Easy Ukulele Folk Songs*. (We haven’t included turnarounds in minor keys because the minor mode songs in the book are all in one key, A minor.)

Please visit <https://ukulele.io/folkbonus/> for video and audio demonstrations of turnarounds.

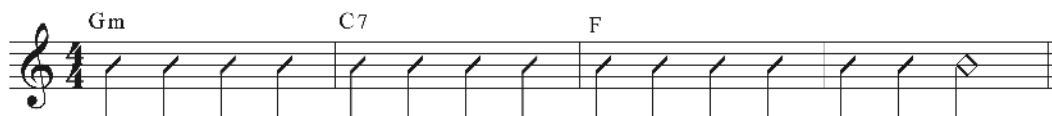
Turnarounds in 4/4 Time in 3 Keys

Strumming Pattern:

↓ ↓↑ ↓ ↓↑



F Major



C Major



G Major

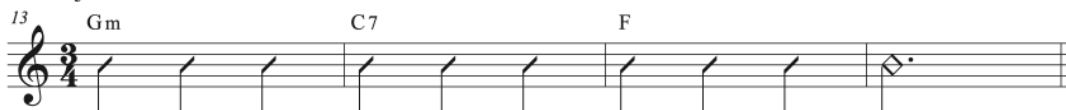


Strumming Pattern:

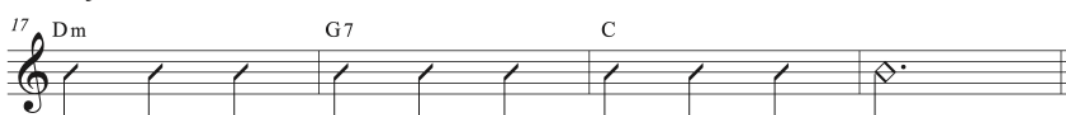
↓ ↓ ↓

Turnarounds in 3/4 Time in 3 Keys

F Major



C Major



G Major



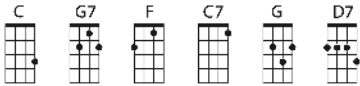
Tags

Tags are a fun way to end a song. They can simply be added at the end of the song. "Shave and a Haircut" is one of the most famous tags around. Here is "Shave and a Haircut" in the 3 keys we use in *21 Easy Ukulele Folk Songs*. It can be added the end of any song in 4/4 time.

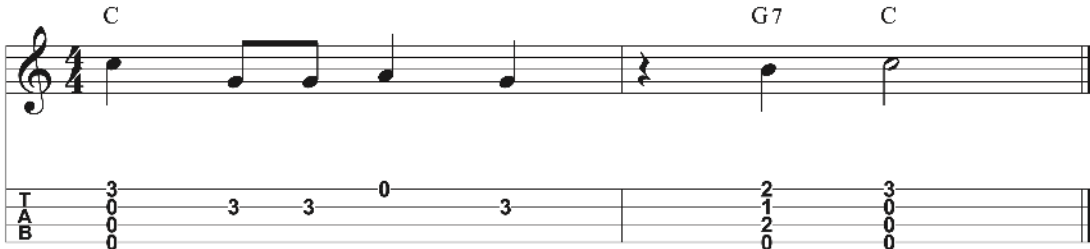
Be sure to visit <https://ukulele.io/folkbonus/> to see and hear Jenny give a demonstration of this tag.

Shave and a Haircut in 3 Keys

C Major



C G7 C



F Major



G Major



Thank you for buying *21 Easy Ukulele Folk Songs*! We hope you enjoy the book.